

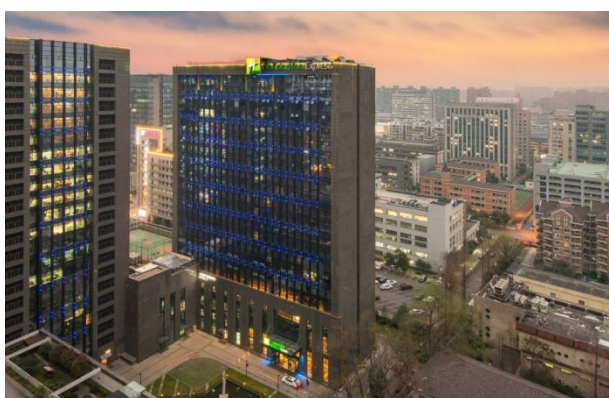
Recommended other surrounding hotels

—、Holiday Inn Express Hangzhou Huanglong, an IHG hotel

1、 Hotel introduction (address: Building 2, Delixi Building, 28 Xueyuan Road, Xihu District, Hangzhou, Zhejiang, China)

Holiday Inn Hangzhou Huanglong Zhixuan, a subsidiary of IHG Intercontinental, is strategically located in the heart of Huanglong Business Circle, Xueyuan Road, Xihu District. Nearby attractions include West Lake Scenic Area, Xixi Wetland Park and Huanglong Sports Center. The subway Line 2 Xueyuan Road station next to the hotel and plenty of taxis nearby make it easy to get to other parts of the city.

2、 Hotel exterior and lobby



Hotel exterior



lobby

3、 Room

Room type	Price	Note
Standard King /Twin Room	400 CNY/per night	include breakfast
Superior King /Twin Room	450 CNY/per night	include breakfast

Reservation: Mr. Ni 13588306679

Due to the shortage of rooms, if you need accommodation, please book as soon as possible!



Twin Room



King Room

4. Transportation

Hangzhou Xiaoshan International Airport

The distance is about 34 km, the duration is about 44 minutes, and the taxi fare is about 75 RMB.

Hangzhou Railway Station

The distance is about 9 km, the duration is about 23 minutes, and the taxi fare is about 23 RMB.

HangZhou East Railway Station

The distance is about 9 km, the duration is about 22 minutes, and the taxi fee is about 23 RMB.

Dragon Hotel - Hangzhou

The distance is about 2 km, the duration is about 7 minutes, and the taxi cost is about 12 RMB.

二、Atour Hotel of Hangzhou Huanglong

1、Hotel introduction (address: No. 3, Tihuan Second Road, Xihu District, Hangzhou)

The hotel is located on the north side of the inner ring road of Huanglong Sports Center. Exit F of Huanglong Sports Center Station on Metro Line 3 is very close to the hotel. Adjacent to Hangzhou New West Lake ten scenic "Yellow dragon Tucui" Huanglong Cave, from West Lake scenic area and Xixi Wetland Park about 15 minutes drive, fully integrated into the Wen SAN Road high-tech Street and Huanglong CBD business district, close to Huanglong bus Center station and Hangzhou West Bus Station. The surrounding financial, commercial and technological buildings are numerous, entertainment venues are concentrated, and the geographical location is superior and the travel is convenient.

2、Hotel exterior and lobby



Hotel exterior

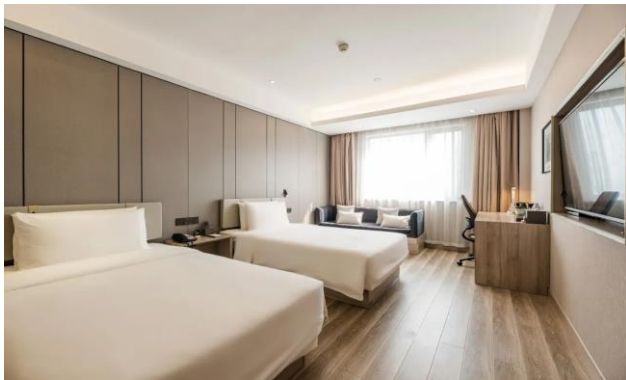


lobby

3、Room

Room type	Price	Note
-----------	-------	------

King Room	550 CNY/per night	include breakfast
Twin Room	550 CNY/per night	include breakfast
<p>Reservation: Sanlue 18657190302</p> <p>Due to the shortage of rooms, if you need accommodation, please book as soon as possible!</p>		



Twin Room



King Room

4、 Transportation

Hangzhou Xiaoshan International Airport

The distance is about 32 km, the duration is about 44 minutes, and the taxi fare is about 71 RMB.

Hangzhou Railway Station

The distance is about 7 km, the duration is about 20 minutes, and the taxi fare is about 20 RMB.

HangZhou East Railway Station

The distance is about 9 km, the duration is about 22 minutes, and the taxi fee is about 23 RMB.

Dragon Hotel - Hangzhou

The distance is about 1 km, the duration is about 5 minutes, and the taxi cost is about 12 RMB.

三、Atour Music Hotel(Hangzhou West Lake)

1、Hotel introduction (address: No. 166 Yugu Road, Xihu District, Hangzhou)

The hotel is located in Yugu Road, West Lake District, which is the heart of Hangzhou.

The hotel is a platform type music community theme hotel under the Aduo Group.

The hotel creates an immersive music atmosphere, with thousands of vinyl records and hundreds of music accessories to let guests relax and enjoy the music world.

Enrich your travel life with weekly music events.

2、Hotel exterior and lobby



Hotel exterior



lobby

3、Room

Room type	Price	Note
King Room	550 CNY/per night	include breakfast
Twin Room	550 CNY/per night	include breakfast

Reservation: Sanlue 18657190302

Due to the shortage of rooms, if you need accommodation, please book as soon as possible!



Twin Room



King Room

4、 Transportation

Hangzhou Xiaoshan International Airport

The distance is about 34 km, the duration is about 50 minutes, and the taxi fare is about 72 RMB.

Hangzhou Railway Station

The distance is about 7 km, the duration is about 20 minutes, and the taxi fare is about 20 RMB.

HangZhou East Railway Station

The distance is about 10 km, the duration is about 23 minutes, and the taxi fee is about 23 RMB.

Dragon Hotel - Hangzhou

The distance is about 2.3 km, the duration is about 6 minutes, and the taxi cost is about 11 RMB.